

All About Capacity





We wer filling containers and
exploring with sand and water.



We were
wondering with

cup + a net holds the most?



we are using a small container
to fill a big container



We had to brush off the
Sand flat so it would be completely
and be exactly 1 cup.



Next Thing we did
was to put the sand ⁱⁿ the
big container.



estimate and then measure the capacity of
x.

	Estimate	Mea
Container B	$\frac{LM}{R} 10 \frac{A}{L}$	

One of us was recording
a tally when we were counting
and filling containers of sand and
water.



Kids were filling containers with other containers to measure the capacity.

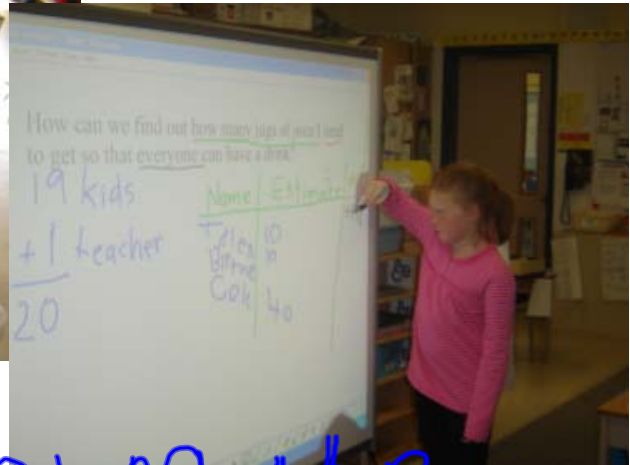
Problem:

How many jugs of juice does Mrs. Dance need to get so that everyone can have a cup?





We had to find a container
That was the same amount as a drink of
juice.



We were filling the
jars container to see how
many CUPS are in one
container.



We need 2 juice containers. Then
we had a friendship
celebrations!